



Pocket Palette Remote Focus Unit

Introduction

Pocket Palette is a Windows Mobile device used for remotely controlling Philips Strand Lighting Control Consoles. It is compatible with Palette or Light Palette series consoles, running Palette OS v10.6.1 or greater software.

Pocket Palette uses wireless Ethernet communications using a Wi-Fi connection and a suitable wireless access point, connected to a Light Palette or Palette series lighting control console.

Prerequisites

To use the Pocket Palette with a Light Palette or Palette series lighting control console, you must have set the IP address of the console and Windows Mobile Device to be on the same subnet. Please consult your System Administrator or product documentation on how to set or change the IP addresses of a Windows Mobile Device.

Note: A DHCP server can be used for this purpose, however a hard IP Address should always be assigned to the Lighting control console.

Guide Contents

- Running the Software
- Controlling the Console
- Troubleshooting

Refer to reverse side of this guide for more information.

Running the Software

Launch the Palette Remote Focus Application (Pocket Palette RFU OS 3.x) and the screen will appear with a set of Tabs at the bottom of the screen:

Chan, Grid, Cue, Looks, Check & Setup

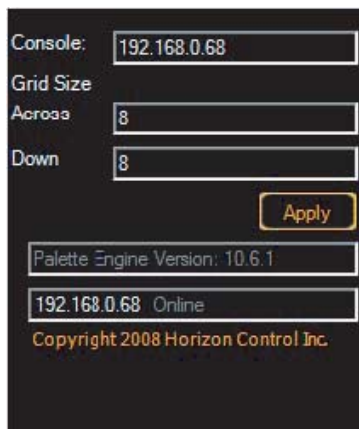
If it is not already selected, select the Setup tab.



Setup Screen

Enter the IP address of the Light Palette or Palette lighting control console and press Apply.

When Connected the Software version of the console the remote control will show:



Software Version Screen

Controlling the Console

With the remote now connected to the console, the remaining tabs at the bottom of the screen provide screens for control functions and displays of information from the control console.

Chan

The Chan tab provides a keypad allowing channels to be selected and their levels set using the '@' symbol.

Grid

The Grid tab lets you see the current levels of channels from the device.

Cue

The cue tab shows the available cue list and cues, allowing them to be selected and run as required.

Looks

This display gives remote control of Submasters and other looks using virtual Faders. Faders are colored Green, Red or are Grayed out depending if they are Normal, Inhibitive or empty.

Check

The Check tab allows you to select channels, for "Rig Check" purposes.

Troubleshooting

Cannot Control Channels from Pocket Palette

The most likely cause for this is that there is no connection between the Pocket Palette and the console. To resolve this check the following:

1. In the Setup Screen Verify that the IP Address of the console has been correctly entered and that the Engine Version is displayed.
2. Check that the Wireless Connection is working and that it is physically connected to the lighting control console.
3. Check that the console is running PaletteOS v10.6.1 or later.

Philips Strand Lighting

Dallas
10911 Petal Street
Dallas, TX 75238
Tel: (214) 647-7880
Fax: (214) 647-8031

New York
267 5th Ave, 4th Floor
New York, NY 10016
Tel: (212) 213-8219
Fax: (212) 532-2593

www.strandlighting.com

© Philips Group 2011
All rights reserved.
The Company reserves the right to make any variation in design or construction to the equipment described. E&OE

Auckland
19-21 Kawana Street
Northcote, Auckland 0627
New Zealand
Tel: + 64 9 481 0100
Fax: + 64 9 481 0101

Asia
Room 6-10,
20/F Delta House
3 On Yiu Street
Shatin, N.T. Hong Kong
Tel: + 852-2757-3033
Fax: + 852-2757-1767

Europe
European Service & Distribution Centre
Marssteden 152
Enschede 7547 TD
the Netherlands
Tel: +31-53-4500424
Fax: +31-53-4500425