

Palette™ and LightPalette™ Software Upgrade Guide Version 10

Congratulations on your choice to upgrade your Palette or LightPalette console to Version 10 of our Palette OS.

We have spent the past several months listening to programmers, designers and electricians tell us what they want and have made many fundamental changes to the software to give you a better product. These changes include, but are not limited to, the graphical user interface, command line syntax and added features that change the way you interface with the console as well as improvements to the way it presents the information to you.

In order to help guide you through the upgrade, we offer some advice on where to turn first to ensure that you have a comfortable upgrade experience.

To upgrade, download the software from www.strandlighting.com. Go to Support and Product Downloads to download the software. The executable file that you download can go directly at the top of D:\ in the root folder by copying it from a USB key. Just insert into a USB port on the console, wait for the Windows Explorer window to pop up then navigate so that you can cut and paste or click and drag. Once the file is copied, remove the key and reboot.

Once you upgrade, you will find a completely different graphical user interface. Let us offer this upgrade guide to help get you started.

The standard Live screen is much improved. The image on page 2 shows the new software with a showfile from a NY production.

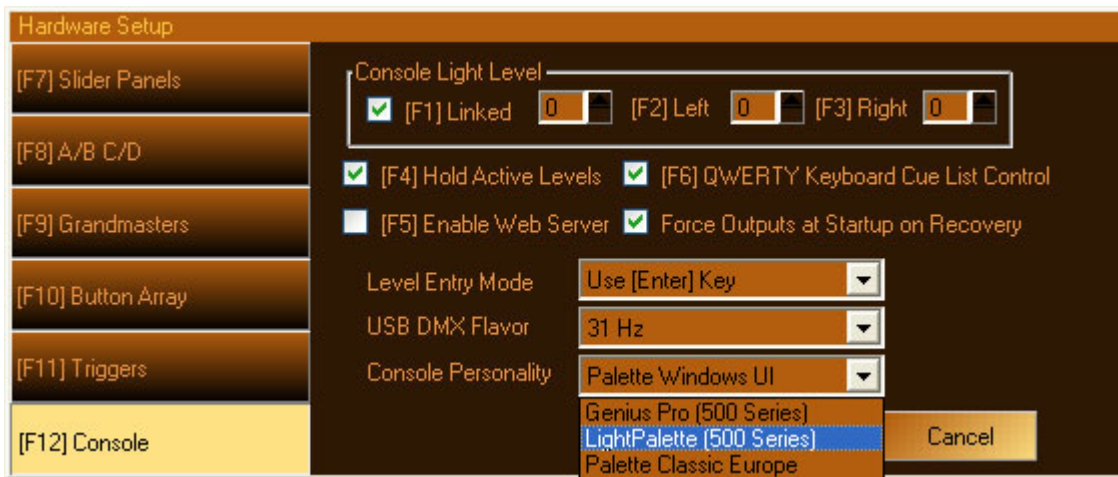
The screenshot shows the Strand Lighting software interface with several callout boxes highlighting new features:

- Display Buttons:** Located at the top left of the interface.
- Display Status:** Located at the top right of the interface.
- Color Display:** A callout pointing to the main grid of fixture data, with the text "Turn on or off with display pulldown menu".
- New Playback Icons:** A callout pointing to the playback controls on the left, with the text "Windows UI personality only".
- Enhanced Playback Bubbles:** A callout pointing to the cue list on the left, with the text "Doubles as enhanced moving light info".
- New Status Window:** A callout pointing to the bottom right area, with the text "The status softkey S11 can change views here".
- Enhanced Command Line:** A callout pointing to the bottom left area, which includes cue timing and recording controls.
- Double the amount of softkeys with the M keys:** A callout pointing to the bottom right area, which shows a row of softkeys labeled M1 through M12.

Note: if you take the mouse pointer to the top of the screen, the task bar that is hidden will appear and give you File, Display and Help pulldown menus.

We want to make sure that you know that you have a choice for interfacing with your console on software version 10. We now include console personalities. These personalities allow you to choose how to interface with the desk as well as choose how the information presents itself to you.

Go to S3 Hardware Setup > S12 Console



If you like the interface that you currently have, don't worry, just select Palette Windows UI. You will get playback icons above the cue list and all action buttons will initiate a dialogue box as they do now. For example, RECORD will initiate the record dialogue box and so on. The status bubbles have been eliminated and all status information has been redistributed around the screen. Some status information is above the channel grid and some is in the Status Window bottom right.

If you prefer a more command line oriented approach, just select any of the other personalities based on preference for channel level colors and English language spelling. The first two that reference the 500 series line of consoles will give you 500 series level colors (green is down, magenta is up and cyan is tracking), the next two will give you LP90 level colors (green is down, cyan is up and magenta is tracking). The Genius Pro or European versions will use British spelling choices while the LightPalette or US versions will use American spelling choices.

Any of the personalities other than the Windows UI will assume a command line preference. This doesn't mean you can't use a touchscreen or the mouse; it's just oriented for command line operation. Notice that the playback icons are no longer present. Also, all action buttons will go directly to the command line and will not initiate a dialogue box unless you precede the action command with shift.

For example, if you want to record a cue, just type RECORD 1 ENTER. This will record cue 1 using your default record preference which is set in Show Options.



If you wish to initiate a dialogue box to help through recording, just type SHIFT RECORD. This will bring up the dialogue box with which you are already familiar.

This is consistent with all commands in the software. So just remember, that RECORD or any action button will go directly to the command line, SHIFT RECORD or any action button will initiate the dialogue box.

From here, we recommend that you go through the Installation and Setup Guide that is available for download from www.strandlighting.com.

This will take you through the next level of understanding of your console's new and improved software.

Happy Programming!

The Software Teams at Strand Lighting and Horizon Control

