

Vision.net 4

Vision.net 4 is a fully integrated suite of architectural lighting controls designed to meet the needs of the most demanding customers. Scalable from a single room to large multi-building campuses our decentralized control approach delivers maximum reliability and flexibility.

Designed to integrate with all of our dimming systems, low voltage switching cabinets and DMX drivers Vision.net 4 can control any lighting load with intuitive precision.



Vision.net 4 7-Inch Color Touchscreen

Features

- Next generation scalable architectural control from a single room to a multi-building campus
- Scales from a single space up to 255 rooms in a single system. Systems may be linked to build a system with up to 1000 systems each with 255 rooms
- Distributed intelligence - no central processor required
- Available with push button, slider and touchscreen panels
- Simple computer-based set up and configuration with Vision.net 4 designer software
- Fully scalable to over 1,000 stations
- Occupancy sensors and photocells available
- Designers can easily create rooms, room combinations and easily define stations and buttons
- Vision.net 4 designer provides a simple graphical set up and configuration system for original set up and updates as the needs of a facility changes
- Low-cost Cat 5e wiring
- Touchscreen systems provide connectivity to PaletteOS consoles and dimmer racks for system access and monitoring
- Smart jacks allow portable stations to be customized for each room. One portable can be used in multiple spaces each with a unique configuration.
- 127 channels per room
- Unlimited dimmers per room with patching and DMX512 snapshot support
- 255 stations per system
- Astronomical time-clock and calendar-based events
- Connects to C21, EC21, A21, R21 and Contact systems
- Vision.net 4 to DMX512 module available for DMX512 controlled devices

PHILIPS
Strand Lighting

SPECIFICATION SUBMITTAL

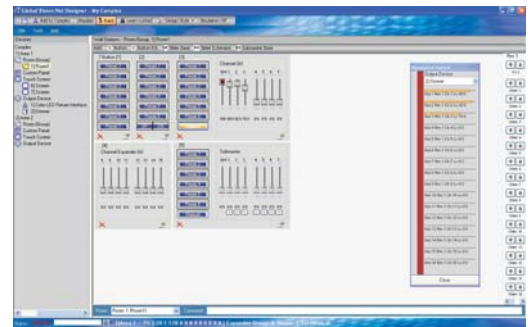
CONSULTANT: <input type="text"/>	PROJECT NAME: <input type="text"/>	MODEL NUMBER QUANTITY: <input type="text"/> <input type="text"/> <input type="text"/> <input type="text"/> <input type="text"/> <input type="text"/>
DATE: <input type="text"/>	PROJECT NUMBER: <input type="text"/>	APPROVED BY: <input type="text"/>

Vision.net 4 Touchscreen Features

- Full-color touchscreens available in a range of screen sizes
- Screens may be easily configured and set up with Vision.net 4 Designer software with USB, serial data, and Ethernet interfaces
- Using our optional ShowNet Ethernet connectivity touchscreens can provide remote access to Strand Lighting Rack Palette, Palette, and Light Palette control consoles, C21, EC21 A21, and R21 dimming systems
- Touchscreens provide system astronomical time-clock and calendar functions
- Portable touchscreens available
- Fully graphical-room combine supported
- A variety of backgrounds and button styles are available to create dynamic easy to use screens
- Wide range of on-screen button and fader options
- Multi-language text support is available along with a large selection of icons allow users to label and inform users
- Web browser available for all network-based stations
- Screen support is available from a variety of clock displays and a stop watch timer for theatrical applications



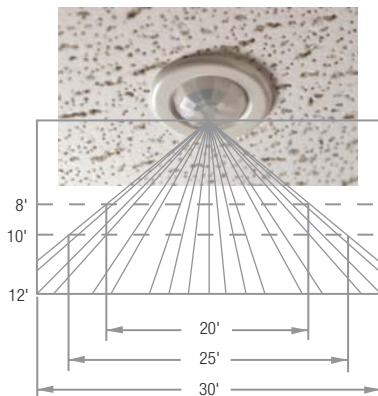
Vision.net 4 Touchscreen



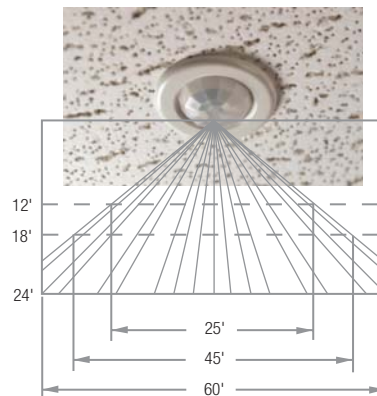
Touchscreen Set-up Slider/Button View

Vision.net 4 Occupancy Sensors

Vision.net 4 occupancy sensors and photocells provide dynamic lighting control for your facility. Choose from two ceiling-mount occupancy sensors to meet the specific needs of your system. Photocell stations provide a choice of lumen maintenance and daylight harvesting. All settings and features of Vision.net 4 occupancy sensors and photocells are easily programmed - from the ground without the use of ladders - using the IR Sensor Programming remote.



Field of View: Occupancy Sensor (63059CM)



Field of View: Occupancy Sensor (63059HB)



63063 IR Sensor Programming Remote Transmitter

Vision.net System Architectural Comparison

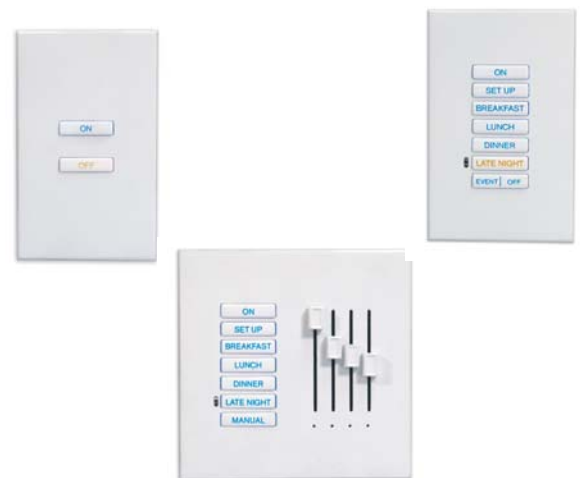
Feature	Vision.net 4	Vision.net 3
Number of Areas for Configuring Complex Systems	1000	1
Stations per Room	1023	1023
Channels per Room	127	127
Multiple Appearance Options for Touchscreen Items	Y	N
Included Background Touchscreen Images	Y	N
Advanced Configuration Options for Touchscreen Items	Y	N
Touchscreen Buttons and Sliders can be Scaled to any Size	Y	N
Touchscreen Buttons and Sliders can have Background Icons	Y	N
Touchscreen Buttons and Sliders have Many Configuration Options	Y	N
Photocell Sensor Configuration Available	Y	N
0-10v Analog Sensors Configuration Available	Y	N
Occupancy Sensors Configuration Available	Y	Y
Contact Closure Sensors Configuration Available	Y	Y
Vision.net to Palette Console Communication Protocols	RS232, Network	RS232
Distributed Intelligence - No Central Processor Required	Y	Y
Connects to all Vision.net Hardware	Y	Y
Astronomical Time Clock and Calender Based Events	Y	Y
Connects to C21, EC21, A21, R21 and Contact Systems	Y	Y
Connects to any DMX512 Based Device with Available DMX512 Modules	Y	Y
Smart Jacks Available	Y	Y

Vision.net 4 Control Station Features

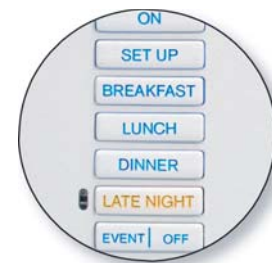
- All station buttons and faders are fully programmable
- All stations include integrated processors and may operate as stand-alone systems
- Station set up and configuration is simple
- Configuration software can upload and download station set-up data
- Commands include (but are not limited to):
 - Raise/lower
 - Preset
 - Toggle on/off
 - Smart commands allow multiple system commands to be executed from a single button press
 - Commands to PaletteOS consoles
- All keypads feature programmable backlighting
- Custom-configurable button and slider stations
- IR Remote port
- Optional IR Remote Transmitter with four-room, four-scene control, master raise/lower, and all on/off
- Available in five standard colors:



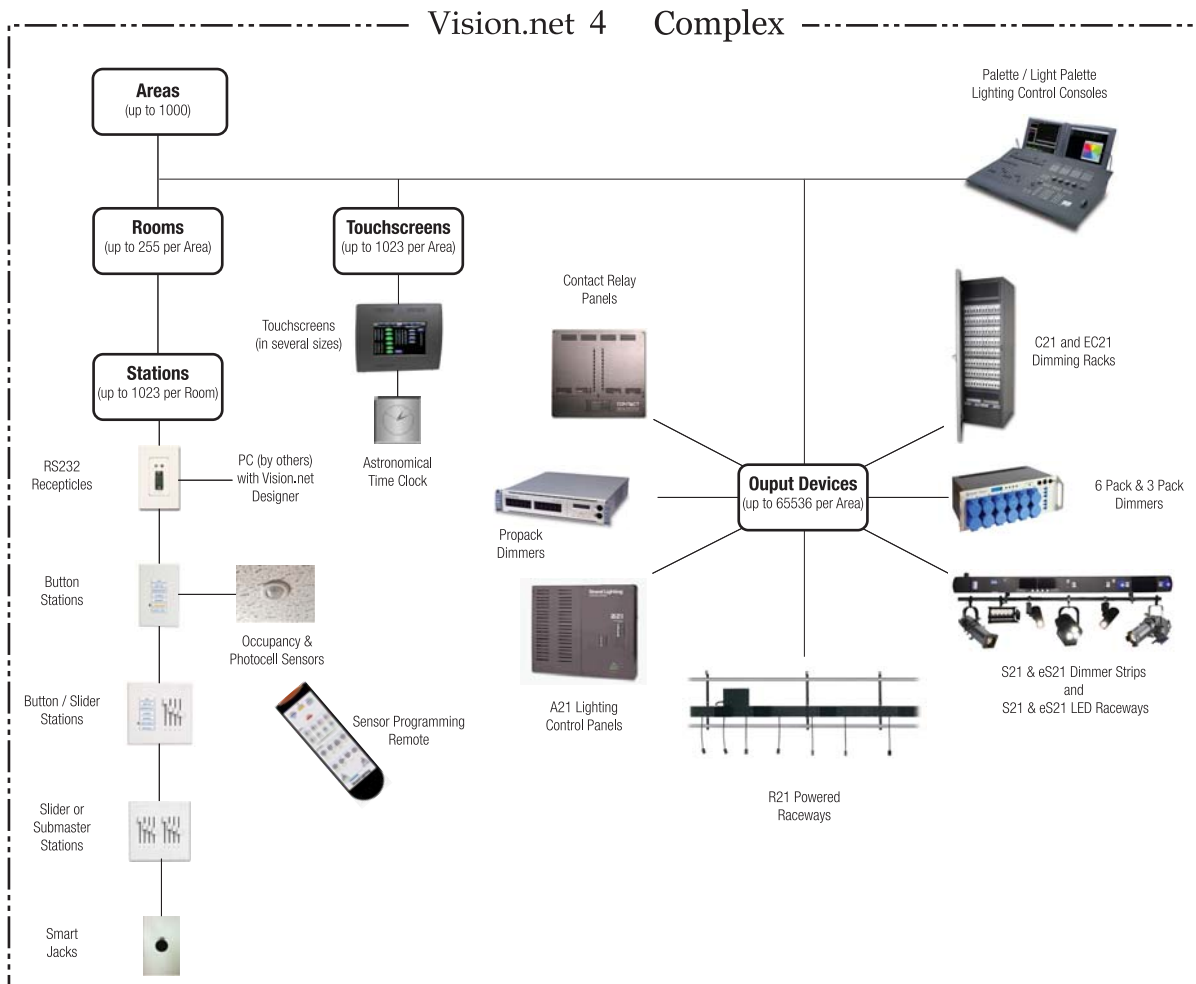
White Ivory Brown Black Gray



Vision.net 4 stations provide a wide range of button and slider stations. Any button can be programmed with a wide range of functions.



Button stations allow for custom engraving and are backlit to show what scene is active.



Vision.net 4 Designer

- Windows-based configuration software
- Simple point and click operation
- Easy download and upload of station configuration data to an entire system from a single access point
- Built in design tools and system simulators allow users to fully test and simulate their systems
- Drag and drop touchscreen setup



Vision.net 4 Designer set-up screen.



System outputs may be simulated so that you can easily test your design and configuration.



Web browser available for all network-based stations.



Optional remote access to Strand control consoles via ethernet.

Ordering Information

Cat No. Description

Vision.net 4 Control Stations

Touchscreen Stations

<p>95242A Vision.net 4 7-inch color VGA touchscreen station, light almond*</p> <p>95242B Vision.net 4 7-inch color VGA touchscreen station, black*</p> <p>95242P Vision.net 4 7-inch color VGA touchscreen station, portable in Hammond Case</p> <p>95242SE Vision.net 4 7-inch color VGA touchscreen station, flush, locking enclosure, black</p> <p>95242RM Vision.net 4 7-inch color VGA touchscreen station, rack mount, black</p>	<p>95246RM Vision.net 4 15-inch color VGA touchscreen station, rack mount</p> <p>95246SE Vision.net 4 15-inch color VGA touchscreen station, rack mount, with locking enclosure</p>	<p>* Note, these items require one of the following back boxes:</p> <p>95243 Vision.net 4 7-inch flush mount back box kit for 95242A or 95242B</p> <p>95244 Vision.net 4 7-inch surface mount back box kit for 95242B</p>
--	---	---

Pre-populated Standard Stations

63303	Vision.net 4 slider station with IR, 3 channel & master, 6 presets, 2-gang
63306	Vision.net 4 slider station with IR, 6 channel & master, 6 presets, 3-gang
63309	Vision.net 4 slider station with IR, 9 channel & master, 6 presets, 4-gang
63321	Vision.net 4 push button station, 1 button, 1-gang
63312	Vision.net 4 slider station, 12 channel & master, 7 presets, 5-gang
63315	Vision.net 4 slider station, 15 channel & master, 7 presets, 5-gang

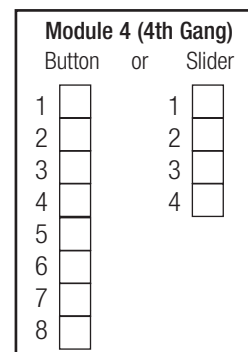
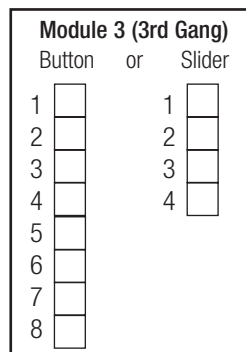
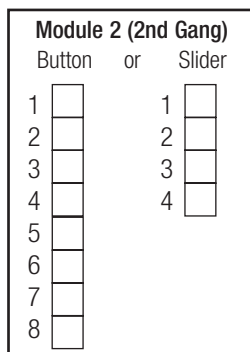
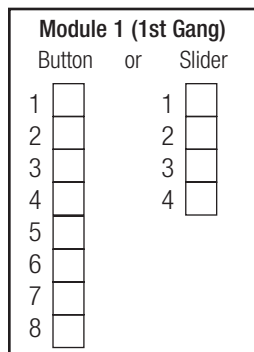
Custom Stations

63398	Custom Vision.net 4 station
63322	Vision.net 4 push button station, 2 button, 1-gang
63324	Vision.net 4 push button station with IR, 4 button, 1-gang
63328	Vision.net 4 push button station with IR, 8 button, 1-gang

Notes:
 To make any station portable, add "P" to the part number.
 IR = Integrated Infrared Receiver
 Color Suffix: -White, -Ivory, -Brown, -Black, -Gray



Vision.net 4 stations may be custom configured for your facility by indicating the number of buttons or sliders that are required in each gang position.



Ordering Information

Cat No. **Description**

Accessories

Occupancy Sensors and Photocells		Vision.net 4 DMX Interface	
63059CM	Ceiling-mount occupancy sensor	63054	Vision.net 4 to DMX512 interface
63059HB	High bay-mount occupancy sensor		
63060CM	Ceiling-mount photocell	Vision.net 4 Data Cable Splitter	
63063	Remote programmer for occupancy sensors and photocells	63055RM	Vision.net 4 4 way data cable splitter for panel mounting
63065SE	AV input/occupancy sensor interface	63055SE	Vision.net 4 4 way data cable splitter with enclosure
Vision.net 4 Portable Extension Cables		Vision.net 4 Configuration Software	
<p>Note: All table top stations include one 25 ft. cable</p>			
95095	Vision.net 4 Portable Extension Cable, 10FT (3M), (A4M-A4F)	67518	Windows configuration software on CD-ROM
95096	Vision.net 4 Portable Extension Cable, 25FT (8M), (A4M-A4F)		
95097	Vision.net 4 Portable Extension Cable, 50FT (16M), (A4M-A4F)		
Receptacle Stations			
63341	Vision.net 4 Smart Jack receptacle, 1 gang*		
63035	Vision.net 4 RS232 programming station*		
<p>* Includes stainless steel faceplate with insert</p>			

Philips Strand Lighting

Dallas
10911 Petal Street
Dallas, TX 75238
Tel: (214) 647-7880
Fax: (214) 647-8031

New York
267 5th Ave, 4th Floor
New York, NY 10016
Tel: (212) 213-8219
Fax: (212) 532-2593

www.strandlighting.com
© Philips Group 2012
All rights reserved.
The Company reserves the right to make any variation in design or construction to the equipment described. E&OE

Auckland
19-21 Kawana Street
Northcote, Auckland 0627
New Zealand
Tel: + 64 9 481 0100
Fax: + 64 9 481 0101

Asia
Unit C, 14/F,
Roxy Industrial Centre
No. 41-49 Kwai Cheong Road
Kwai Chung, N.T., Hong Kong
Tel: +852-2796-9786
Fax: +852-2798-6545

Europe
European Service & Distribution Centre
Marssteden 152
Enschede 7547 TD
the Netherlands
Tel: +31-53-4500424
Fax: +31-53-4500425