

Vision.net

Vision.net touchscreen technology is designed to bring exceptional control and flexibility to your project. Whether you are designing a board room or a large hotel and convention center complex, Vision.net provides a wide range of fully scalable solutions. Easy to set up and program, Vision.net touchscreens can be combined with our Vision.net control stations, offering a wide range of push-button and slider stations to meet the needs of any system. Any system command may be programmed to any push button in your system for exceptional flexibility.

Vision.net opens a connection to our powerful range of entertainment lighting control systems, providing large scale control for any interactive display or presentation in today's modern themed environments.



Vision.net 7-Inch Color Touchscreens
(shown in Gray and Almond)

Features

- Next-generation architectural control
- Touchscreen systems provide connectivity to Palette consoles and dimmer racks for system access and monitoring
- Station-based technology; no central processor required
- Available with push-button, slider and touchscreen panels
- Simple computer-based set up and configuration with Vision.net designer software
- Fully scalable to hundreds of stations
- Occupancy sensors and photocells available
- Designers can easily create rooms, room combinations and easily define stations and buttons
- The system can easily upload existing configurations for editing
- Systems are simple to support and change
- Low-cost Cat 5E wiring
- Scales from a single space up to 255 rooms in a single system
- 125 channels per room
- Unlimited dimmers per room with patching and DMX512 capture support
- 255 stations per system
- Astronomical time-clock and calendar-based events
- Connects to C21, A21, R21 and Contact systems
- Vision.net to DMX512 module available for interface to a wide range of DMX512-controlled devices

PHILIPS
Strand Lighting

SPECIFICATION SUBMITTAL

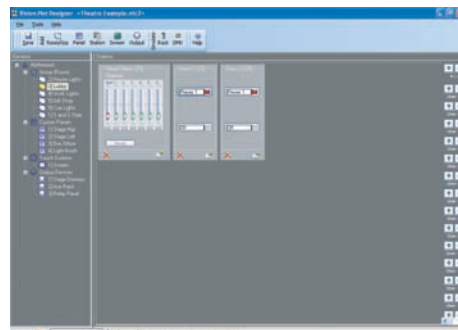
CONSULTANT: <input type="text"/>	PROJECT NAME: <input type="text"/>	MODEL NUMBER QUANTITY: <input type="text"/> <input type="text"/> <input type="text"/> <input type="text"/> <input type="text"/> <input type="text"/>
DATE: <input type="text"/>	PROJECT NUMBER: <input type="text"/>	APPROVED BY: <input type="text"/>

Vision.net Touchscreen Features

- Full-color touchscreens available in 7-inch, 10-inch and 15-inch screen sizes
- Screens may be easily configured and set up with Vision.net Designer software with USB, serial data, and Ethernet interfaces
- Using our optional ShowNet Ethernet connectivity touchscreens can provide remote access to Strand Lighting Rack Palette, Palette and Light Palette control consoles, C21, A21, and R21 dimming systems
- Touchscreens provide system astronomical time-clock and calendar functions
- Wireless touchscreen available
- Fully graphical-room combine supported
- Bit-mapped backgrounds provide custom appearance
- Wide range of on-screen button and fader options
- Web browser available for all network-based stations
- Custom button styles and fader labeling with a wide range of features and functions



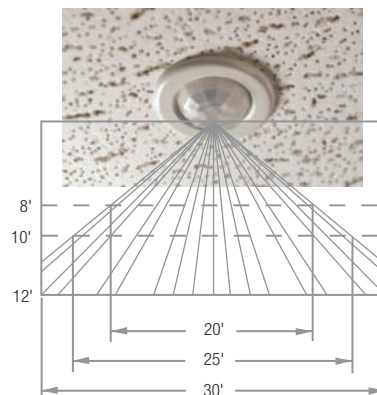
Wireless Touchscreen



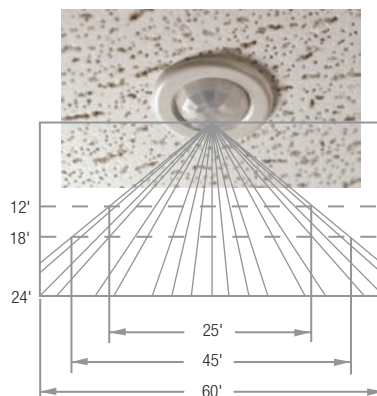
Touchscreen Set-up Slider/Button View

Vision.net Control Station Features

- All stations' buttons and faders are fully programmable
- All stations include integrated processors and may operate as stand-alone systems
- Station set up and configuration is simple
- Wall stations all have unique addresses
- Configuration software can upload and download station set-up data
- Commands include:
 - Raise/lower
 - Preset
 - Toggle on/off
 - Smart commands allow multiple system commands to be executed from a single button press
 - Commands to Palette and Light Palette consoles
- All keypads feature programmable backlighting
- IR Remote port



Field of View: Occupancy Sensor (63059CM)



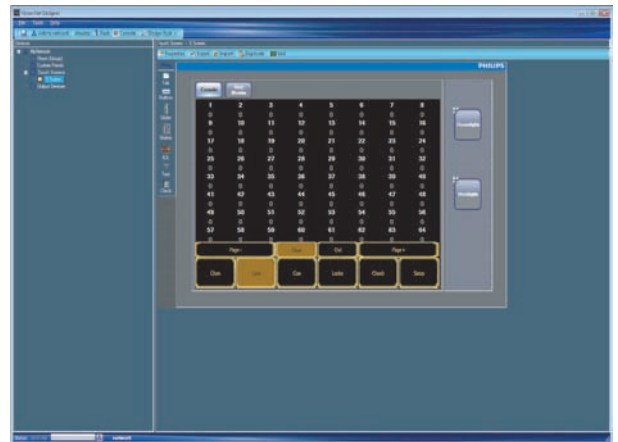
Field of View: Occupancy Sensor (63059HB)

Vision.net Occupancy Sensors

Vision.net occupancy sensors and photocells provide dynamic lighting control for your facility. Choose from wall-mount and two ceiling-mount occupancy sensors to meet the specific needs of your system. Photocell stations provide a choice of lumen maintenance and daylight harvesting.



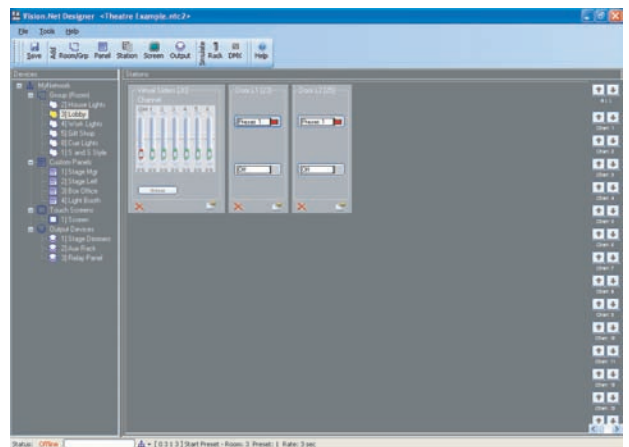
Web browser available for all network-based stations.



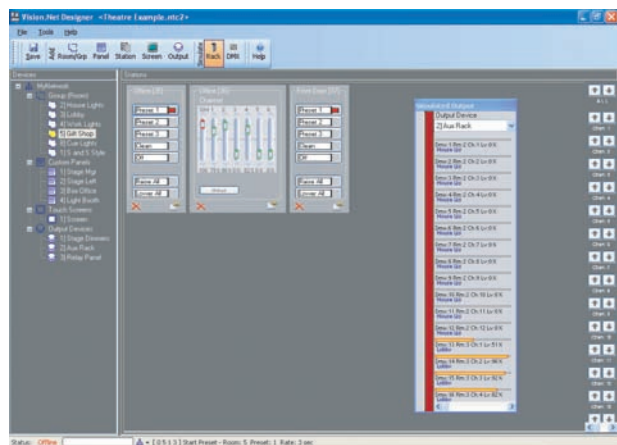
Optional remote access to Strand control consoles via ethernet.

Vision.net Designer

- Windows-based configuration software
- Simple point and click operation
- Easy download and upload of station configuration data to an entire system from a single access point
- Built in design tools and system simulators allow users to fully test and simulate their systems
- Drag and drop touchscreen setup



Vision.net Designer set-up screen.



System outputs may be simulated so that you can easily test your design and configuration.



Vision.net stations provide a wide range of button and fader stations. Any button can be programmed with a wide range of functions.

Ordering Information

Cat No. Description

Vision.net Control Stations

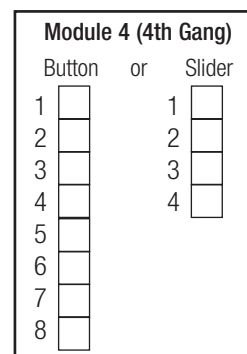
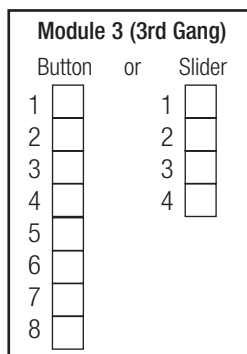
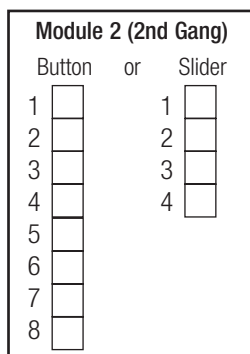
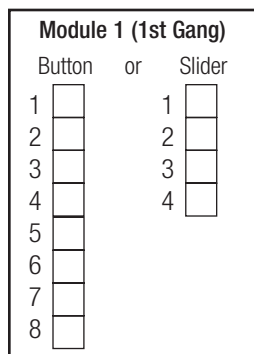
Touchscreen Stations			
95242A	Vision.net 7-inch color VGA touchscreen station, light almond*	95240RM	Vision.net 15-inch color VGA touchscreen station, rack mount
95242B	Vision.net 7-inch color VGA touchscreen station, black*	95241	Vision.net 10-inch wireless color touchscreen
95242P-A	Vision.net 7-inch color VGA touchscreen station, portable, light almond	* Note, these items require one of the following back boxes:	
95242P-B	Vision.net 7-inch color VGA touchscreen station, portable, black	95243	Vision.net 7-inch flush mount back box kit for 95242A Or 95242B
95242SE	Vision.net 7-inch color VGA touchscreen station, flush, locking enclosure, black	95244	Vision.net 7-inch surface mount back box kit for 95242B
95242RM	Vision.net 7-inch color VGA touchscreen station, rack mount, black	95244A	Vision.net 7-inch surface mount back box kit for 95242A, almond finish

Pre-populated Standard Stations			
63303	Vision.net slider station with IR, 3 channel & master, 6 presets, 2-gang	63322	Vision.net pushbutton station with IR, 2 button, 1-gang
63306	Vision.net slider station with IR, 6 channel & master, 6 presets, 3-gang	63324	Vision.net pushbutton station with IR, 4 button, 1-gang
63309	Vision.net slider station with IR, 9 channel & master, 6 presets, 4-gang	63328	Vision.net pushbutton station with IR, 8 button, 1-gang
63321	Vision.net pushbutton station, 1 button, 1-gang	Notes: IR = Integrated Infrared Receiver	

Custom Stations

63398 Custom Vision.net station

Vision.net stations may be custom configured for your facility by indicating the number of buttons or sliders that are required in each gang position.



Ordering Information

Cat No. **Description**

Accessories

Occupancy Sensors and Photocells		Receptacle Stations Note, stainless steel faceplate with insert	
63059CM	Ceiling-mount occupancy sensor	63341	Vision.net Smart Jack receptacle, 1 Gang
63059HB	High bay-mount occupancy sensor	63035	Vision.net RS232 programming station
63059WM	Wallmount occupancy sensor	Vision.net DMX Interface	
63060CM	Ceiling-mount photocell	63054	Vision.net to DMX interface (for use with Standard DMX512 dimmers)
63063	Remote programmer for occupancy sensors and photocells	Vision.net Data Cable Splitter	
63065SE	AV input/occupancy sensor interface	63055RM	Vision.net 4 way data cable splitter for panel mounting
Vision.net Portable Extension Cables		63055SE	Vision.net 4 way data cable splitter with enclosure
Note: All tabletop stations include one 25 ft. cable		Vision.net Configuration Software	
95095	Vision.net Portable Extension Cable, 10FT (3M), (A4M-A4F)	67518	Windows configuration software on CD-ROM
95096	Vision.net Portable Extension Cable, 25FT (8M), (A4M-A4F)		
95097	Vision.net Portable Extension Cable, 50FT (16M), (A4M-A4F)		

Philips Strand Lighting

Dallas

10911 Petal Street
Dallas, TX 75238
Tel: (214) 647-7880
Fax: (214) 647-8030

New York

267 5th Ave, 4th Floor
New York, NY 10016
Tel: (212) 213-8219
Fax: (212) 532-2593

www.strandlighting.com

© Philips Group 2009
All rights reserved.
The Company reserves the right
to make any variation in design or
construction to the equipment
described. E&OE

Auckland

19-21 Kawana Street
Northcote, Auckland 0627
New Zealand
Tel: + 64 9 481 0100
Fax: + 64 9 481 0101

Asia

Room 6-10,
20/F Delta House
3 On Yiu Street
Shatin, N.T. Hong Kong
Tel: + 852-2757-3033
Fax: + 852-2757-1767

Europe

European Service & Distribution Centre
Marssteden 152
Enschede 7547 TD
the Netherlands
Tel: +31-53-4500424
Fax: +31-53-4500425