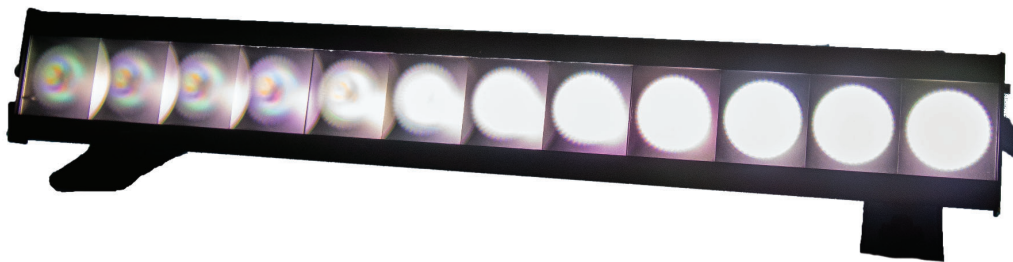
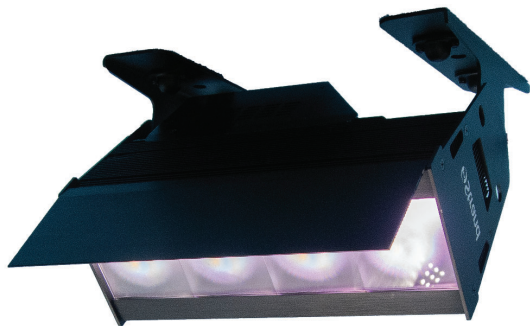




# AURORA LED STRIP



The Strand Aurora LED Strip is a high output theatrical strip luminaire that provides rich color mixing for multiple applications around the performance stage, including set piece illumination, graze / cyc lighting, foot lighting, and more. The Strand Aurora LED is available in a 4-cell and 12-cell version and is suitable for theatres, houses of worship, and TV and film studios. The RGBALC (Red, Green, Blue, Amber, Lime & Cyan) color mixing system on the Aurora LED offers a wide mixable color spectrum, but it can be easily controlled with traditional CYM controls using the SmartColor Control system.



# AURORA LED STRIP

## FEATURES AND BENEFITS

- **High output LED Strip with 4- and 12-cell versions** - modern theatrical strip with quality you can trust.
- **High CRI RGBALC Color System with SmartColor Control** - wide range of vivid color options that can be programmed using CYM
- **Independent color mixing and temperature controls** - match color pallet to color temperature without manual adjustment for simpler programming
- **Pixel control of each cell** - easily create split colors or gradients
- **Fanless design** - perfect for use in quiet environments
- **Adjustable frequency to exceed camera frame rates** - camera friendly fixtures for IMAG, event recordings, or TV and film applications



# AURORA LED STRIP

	AURORA 4	AURORA 12	
<b>SOURCE</b>			
<b>Type</b>	Luxeon C RGBALC LED	Luxeon C RGBALC LED	
<b>Wattage</b>	4pcs x 30W	12pcs x 30W	
<b>OPTICAL PERFORMANCE</b>			
<b>Dimming</b>	16-bit dimming Dim snap on/off DMX control Tungsten amber shift optional on/off DMX control	16-bit dimming Dim snap on/off DMX control Tungsten amber shift optional on/off DMX control	
<b>Dimming curves</b>	Square Law Linear S-Curve	Square Law Linear S-Curve	
<b>CCT</b>	2,700 - 10,000K	2,700 - 10,000K	
<b>Strobe</b>	Standard, Lightning and Random	Standard, Lightning and Random	
<b>Max lumen output</b>	5300	13400	
<b>Lux @ 5m</b>	712	1623	
<b>Lux @ 10m</b>	188	465	
<b>CRI</b>	<b>RA</b>	96 (CCT3200)	96 (CCT3200)
	<b>R9</b>	95	95
<b>TM30-15</b>	<b>Rf</b>	90	90
	<b>Rg</b>	104	105
<b>TLCI</b>	75	75	
<b>Duv (Delta UV)</b>	-0.0054	-0.0054	
<b>TV flicker free</b>	Yes; adjustable 12 Hz-25 kHz	Yes; adjustable 12 Hz-25 kHz	
<b>BEAM</b>			
<b>Beam angle</b>	22°	22°	
<b>Source masking</b>	Integrated removable lens half hat	Integrated removable lens half hat	
<b>Gel frame</b>	Locking slide rails for Gel or additional lens diffusion ( <i>sold by third parties</i> )	Locking slide rails for Gel or additional lens diffusion ( <i>sold by third parties</i> )	
<b>COLOR CONTROL</b>			
<b>Color mixing</b>	RGBALC Direct control or CYM,CTO+Green magenta	RGBALC Direct control or CYM,CTO+Green magenta	
<b>CTO / CTB</b>	Variable control 2,700 - 8,000K	Variable control 2,700 - 4,500K	
<b>Camera adjustments</b>	Magenta / Green shift control	Magenta / Green shift control	



# AURORA LED STRIP

	AURORA 4	AURORA 12		
<b>Color presets</b>	33 predefined calibrated colors 20 user-definable color presets	34 predefined calibrated colors 20 user definable-color presets		
<b>CONTROLS</b>				
<b>Control data protocols</b>	DMX RDM ArtNet sACN	DMX RDM ArtNet sACN		
<b>Data input</b>	5-pin DMX In/Thru RJ45 In	5-pin DMX In/Thru RJ45 In / Thru		
<b>DMX modes</b>	Smart Color Control - 12* / 39 Channels ( <i>*default</i> ) Q Color Mode - 4 Channels Open Color Control - 17 / 53 Channels	Smart Color Control - 12* /39 / 111 Channels ( <i>*default</i> ) Q Color Mode - 4 Channels Open Color Control - 17 / 53 / 149 Channels		
<b>Pixel / cell control options</b>	1 / 4	1 / 4 / 12		
<b>POWER</b>				
<b>Range</b>	100-240VAC	100-240VAC		
<b>Connector type</b>	Input/Thru	Input/Thru		
<b>Max wattage</b>	<b>120V</b>	119.3W	321W	
	<b>240V</b>	118.6W	312W	
<b>ENVIRONMENT</b>				
<b>Cooling system</b>	Convection cooling	Convection cooling		
<b>Operating temp</b>	0°- 40°C	0°- 40°C		
<b>Construction</b>	Cast aluminum	Cast aluminum		
<b>Standard finish</b>	Raven Black	Raven Black		
<b>IP rating</b>	IP20	IP20		
<b>PHYSICALS</b>				
<b>Yoke</b>	Dual 180° feet & omega clamp locking point*	Dual 180° feet with spacing slide adjustment & omega clamp locking point*		
*Omega clamp sold separately				
<b>DIMENSIONS (H x W x D)</b>				
	<b>mm</b>	<b>in</b>	<b>mm</b>	<b>in</b>
<b>Fixture only</b>	326 x 230 x 234	13 x 9 x 9.2	967 x 230 x 234	38 x 9 x 9.2
<b>Packed</b>	400 x 220 x 350	16 x 8.6 x 14	1070 x 220 x 350	42 x 8.6 x 14



# AURORA LED STRIP

	AURORA 4		AURORA 12	
WEIGHT	kg	lb	kg	lb
Fixture only	5.5	12.1	12.5	27.5
Packed	5.5	12.1	12.5	27.5
	6.7	14.7	14.3	31.5
SOFTWARE / FIRMWARE				
Update kit	PEGASUS		PEGASUS	
WARRANTY & APPROBATIONS				
Warranty	2 Years		2 Years	
Approvals / listings	CE, ETL, UL, FCC CSA, RoHS, ISO 9001		CE, ETL, UL, FCC CSA, RoHS, ISO 9001	

PRODUCT NAME	ORDER CODE
AURORA 4 Full Color RGBALC LED BAR c/w power input connector	<b>64508-001</b>
AURORA 12 Full Color RGBALC LED BAR c/w power input connector	<b>64508-002</b>

ACCESSORIES	ORDER CODE
Strand & Vari-Lite 107mm Ø Fastfit Omega clamp x1	<b>3002000390</b>

©2020 Signify Holding. All rights reserved.

All trademarks are owned by Signify Holding or their respective owners. The information provided herein is subject to change, without notice. Signify does not give any representation or warranty as to the accuracy or completeness of the information included herein and shall not be liable for any action in reliance thereon. The information presented in this document is not intended as any commercial offer and does not form part of any quotation or contract, unless otherwise agreed by Signify. Final detailed specifications to be published when the product is commercially released.

Ref: 64508-100-00