



TN-01724

TECHNICAL NOTICE

Product	NEO CONSOLE, NEO PLAYBACK CONTROLLER, and NEO PC
Subject	Version 3.10 Software Release

OVERVIEW

The software for the NEO CONSOLE, NEO PLAYBACK CONTROLLER, and NEO PC has been updated. The latest version is 3.10.0.214.

Version 3.10.0.214 software and release notes can be downloaded from the downloads section of the NEO CONSOLE AND SOFTWARE product page on the Strand website at www.strandlighting.com.

RELEASE NOTES

Version 3.10 includes many enhancements to improve the usability and functionality of the NEO software. It also resolves many issues with the software, including issues that can result in the software crashing.

The enhancements in Version 3.10 are described below. Additional information about these enhancements can be found in the Version 3.10 User Manual Addendum, located on strandlighting.com.

- Added new “Color Table” View Mode, which presents a minimal view of the system channels with each shown as a colored block.
- Added a new field to Profile FXs to cluster channels together when applying any of the stagger functions.
- Added a Quick Select Bar option to select fixtures by type, position, purpose, and color.
- UDP messages can now be broadcast onto the network from the command line.
- Added fixture types, frames, and gobos to the selection shortcut window.
- Added new palette types:
 - A virtual position palette to apply a recorded position palette to moving fixtures.
 - A “Preset” palette type that will record all attributes except intensity.
 - A submaster palette type
- Added a “Hold Changes” mode to the “Park” menu, which will prevent DMX output of all live control.
- Added ability to override the default attribute values for each fixture.
- When running cues with split fade times the sidebar will now show sperate progress indicators for the up and down time.
- Cues can now set to trigger from the tap tempo engine by setting the trigger field in the cue list window.
- The open and save dialogs have been completely redesigned to provide one unified location for all file-based operations. In addition to the new open and save dialogs shown above the system can now

All trademarks are owned by Signify Holding or their respective owners. The information provided herein is subject to change, without notice. Signify does not give any representation or warranty as to the accuracy or completeness of the information included herein and shall not be liable for any action in reliance thereon. The information presented in this document is not intended as any commercial offer and does not form part of any quotation or contract, unless otherwise agreed by Signify. Data subject to change.



directly store any show file in either Microsoft OneDrive, Google Drive or Dropbox cloud services. The console does not need to have any of these services installed.

- The main console wheel can now be used to scrub the play-head in the visual timecode editor when the media is paused.
- Added an independent color picker that can be run on any system connected to the network and is dedicated to applying colors to the selected fixtures.
- When a matrix is added to the magic sheet the user can now select individual cells or groups of cells directly on the sheet.
- Added the new base keyword “CUELIST” has been added for referring cue list via their newly exposed ID. The following command syntax is now valid.

Firmware Version:

DMX Board: V1.28.101 for full size card DMX Board: V1.28.102 for mini card	Encoder Board: V1.7.2
Playback Board: V1.22.3	Program Board: V1.22.2
Wing Control: V1.1.12	Wing Display: V1.1.5
Rack Display: V1.0.4	DMX Mini Board: V1.31.105

Note: The DMX card also contains the MIDI/SMPTE chip. The DMX Board firmware is V1.28.59 while the MIDI/SMPTE chip firmware is Vx.xx.102.

CONTACT INFORMATION

For more information on this technical notice or on Strand products, contact your Authorized Dealer or Strand customer service at 214.647.7880.

SOFTWARE INSTALLATION

To install or update NEO OS, follow these instructions:

Step 1: Download the current upgrade file (file name example: Neo_Setup_3_X_X_XX.exe) from the Strand Lighting website (www.strandlighting.com)

Step 2: Copy the software onto a USB key.

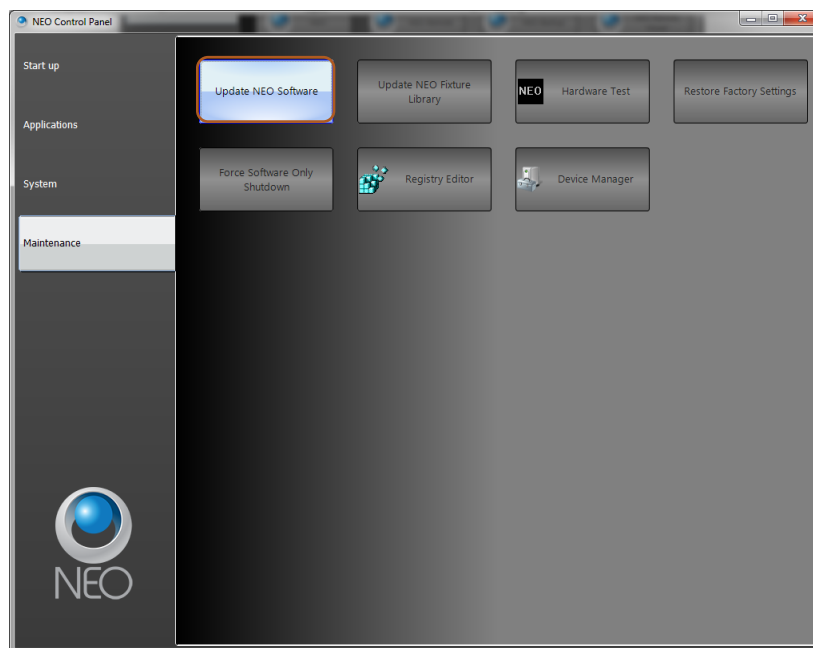
Step 3: Plug the USB key into the console.

Step 4: On the console, open the Control Panel (More > Control Panel).

All trademarks are owned by Signify Holding or their respective owners. The information provided herein is subject to change, without notice. Signify does not give any representation or warranty as to the accuracy or completeness of the information included herein and shall not be liable for any action in reliance thereon. The information presented in this document is not intended as any commercial offer and does not form part of any quotation or contract, unless otherwise agreed by Signify. Data subject to change.



Step 5: Go to the Maintenance environment and select “Update NEO Software”. The updater will look for the latest version of the software both on the hard drive first and then any USB key. Confirm that it is the right version. If it’s not the right version, then check the hard drive and remove any old version that exists or correct the version that is on the inserted USB key.



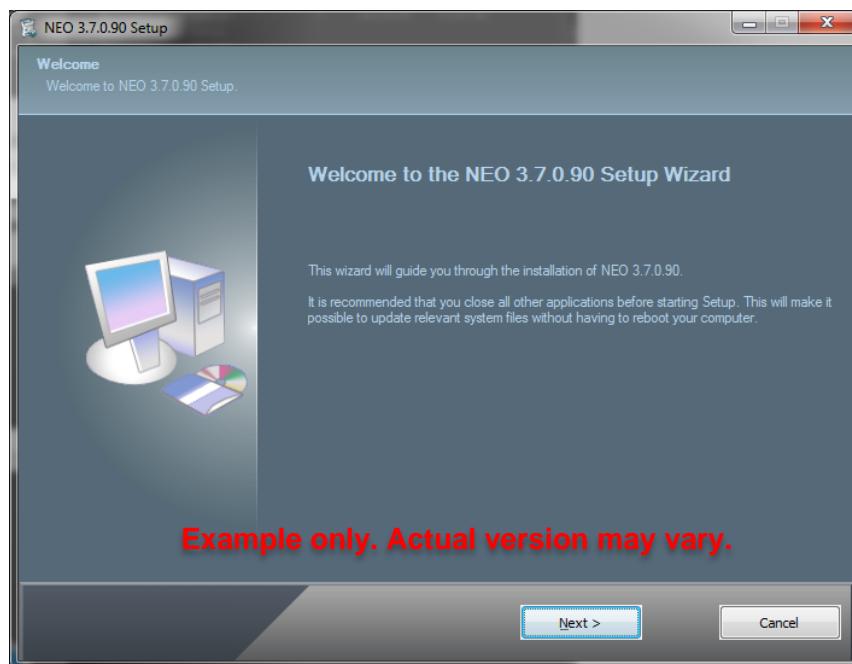
All trademarks are owned by Signify Holding or their respective owners. The information provided herein is subject to change, without notice. Signify does not give any representation or warranty as to the accuracy or completeness of the information included herein and shall not be liable for any action in reliance thereon. The information presented in this document is not intended as any commercial offer and does not form part of any quotation or contract, unless otherwise agreed by Signify. Data subject to change.



Step 6: On the console, the User Account Control dialogue will box will appear.

Step 7: Confirm the program name is the correct version of software and click “Yes”.

Step 8: The NEO software installation screen will appear. Click “Next” and follow all prompts to install the software.



Step 9: The console will need to reboot to complete the installation.

All trademarks are owned by Signify Holding or their respective owners. The information provided herein is subject to change, without notice. Signify does not give any representation or warranty as to the accuracy or completeness of the information included herein and shall not be liable for any action in reliance thereon. The information presented in this document is not intended as any commercial offer and does not form part of any quotation or contract, unless otherwise agreed by Signify. Data subject to change.