

UPDATING 500ML CONSOLE SOFTWARE

Please Read

All information shown in this guide is for reference purposes only and is intended as a simple reference document to update console software. Please refer to the Philips Strand Lighting web site for the latest software release version, to the QuickStart Guide (supplied with the console) and the User's Manual (available for download on the Philips Strand Lighting web site) for complete and updated information about your product.



CAUTION: Before updating the console software, make sure you have made backups of all important show and library files!

Checking Software Version Before Installation

After booting your console, you can check the software version by selecting Settings and then click the "About" tab in the Setup Menu section as shown in [Figure 1](#).

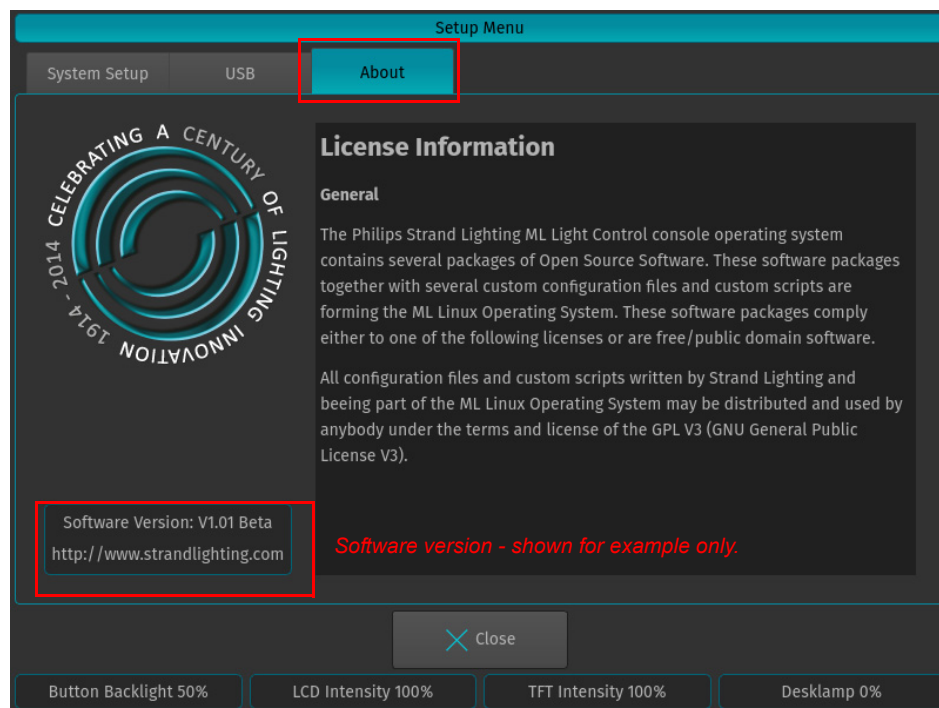


Figure 1: Setup Menu Screen - About Tab - Checking Software Version

You should compare your console's software version with the latest one on the Philips Strand Lighting web site at www.strandlighting.com. If your version is earlier than the one on the web site, you may, at your discretion, download and update your console with the latest version.

Updating Console Options

You have two options to update your console software. They are:

- "Updating Console Software via USB Key" (starting below) *or*;
- "Updating Console Software via Internet Connection" on [page 5](#) of this guide.

Updating Console Software via USB Key



CAUTION: Before updating the console software, make sure you have made backups of all important show and library files!

In order to update the software on the console, make sure you have downloaded the appropriate software from the Strand Lighting website. Copy the downloaded file (with the file extension .swu) to the "\\strandml\software_update" folder on the USB key supplied with the console.

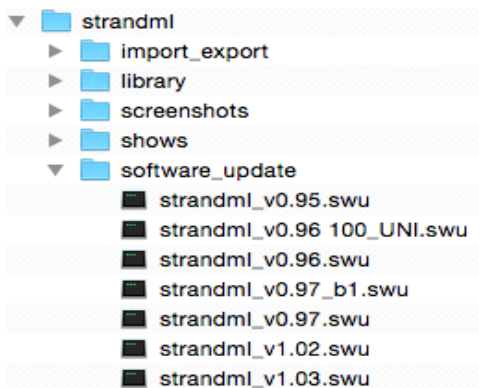


Figure 2: 500ML Console USB Key Folder Structure

Connect the USB key into one of the console’s USB Ports and navigate to the Setup Menu by pressing [SETUP] and selecting the USB Tab. Click on USB Update in the Maintenance section.

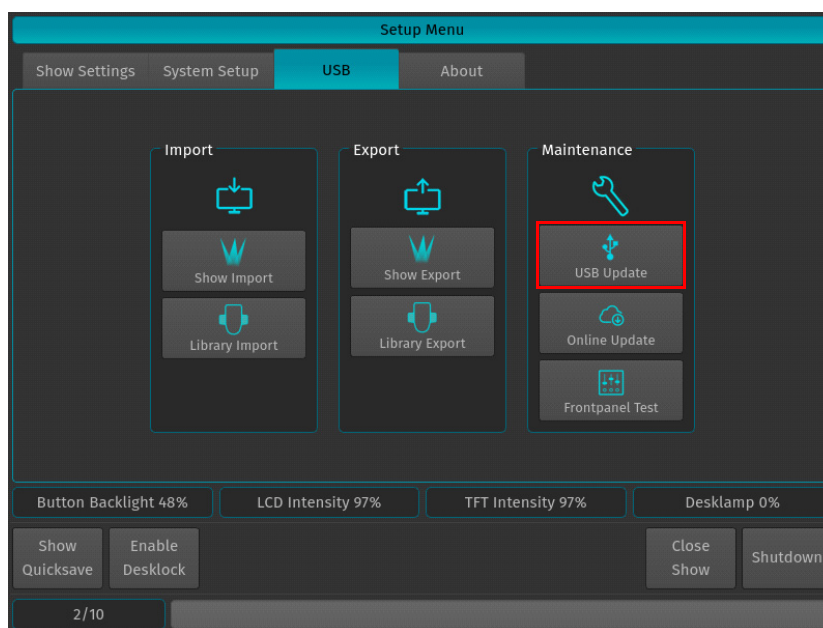


Figure 3: Setup Menu Window - Updating Console Software via USB

Note: You must reboot / restart the console in order for the new software to take effect.



WARNING! During the update process, DO NOT disconnect power OR switch off the console. This may render the console un-bootable! Allow the process to finish completely.

The console's screen will present you with a list (if applicable) of available software updates found on your USB Key. Select the appropriate file and click on Select.

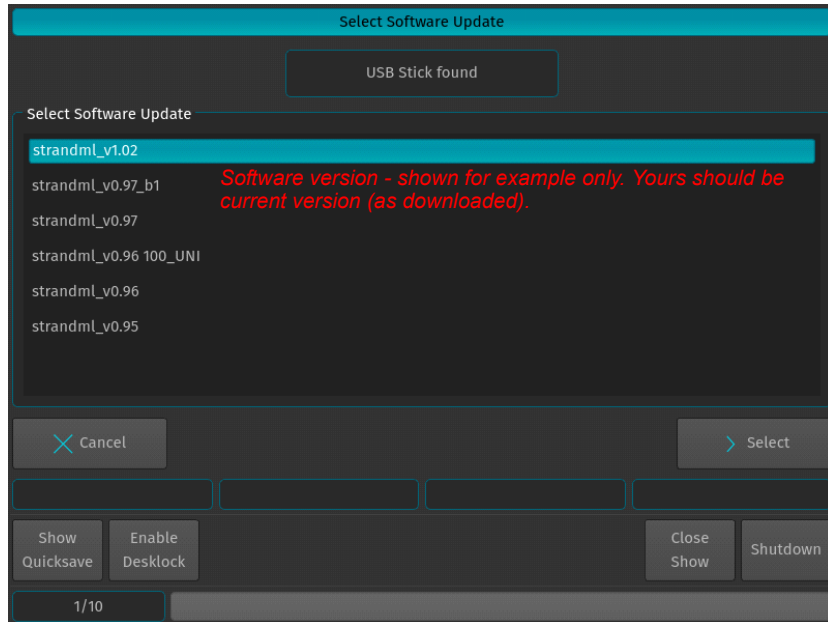


Figure 4: Select Software Update Window - Software Selection Example

A wizard will lead you through a few steps as shown in [Figure 5](#) and [Figure 6](#).

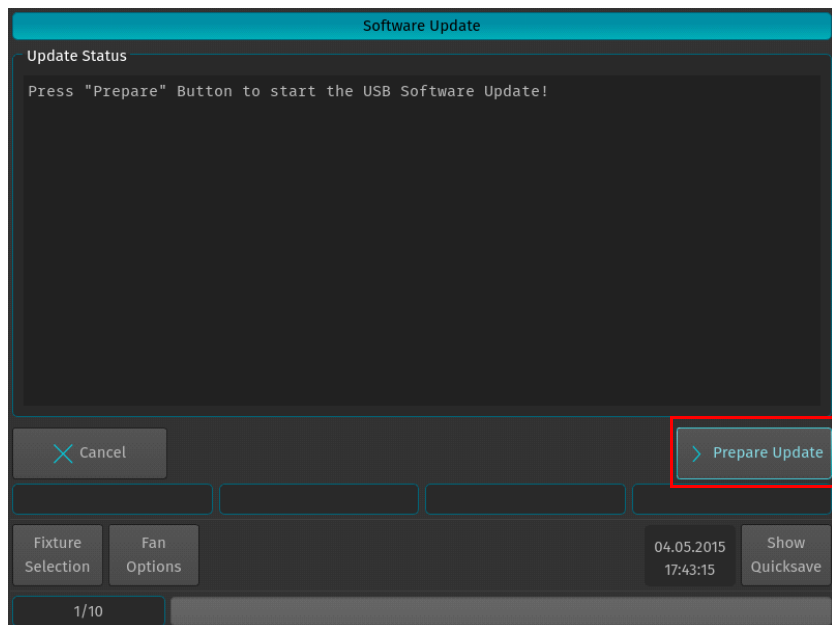


Figure 5: Software Update Window - Software Update Confirmation

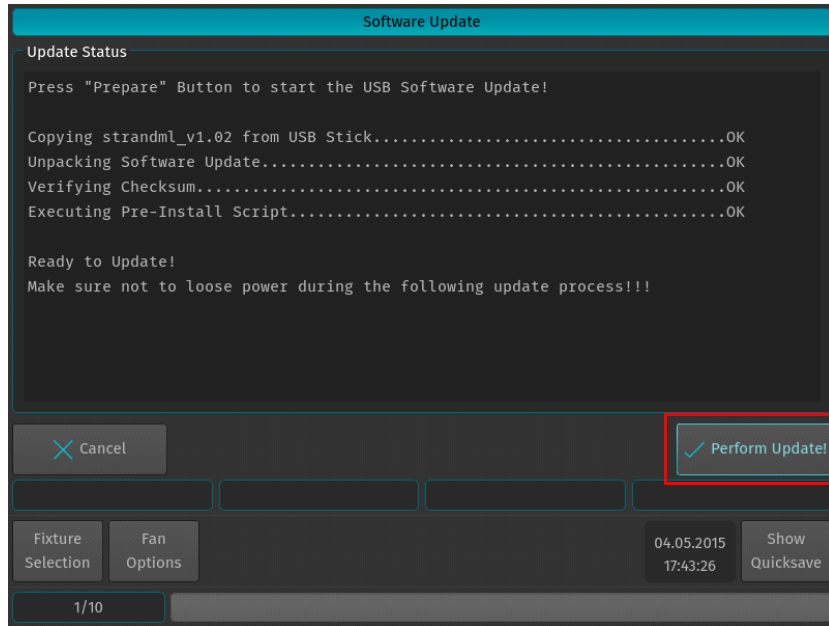


Figure 6: Software Update Window - Perform Update Confirmation

Once the process is completed, you will be prompted to reboot the console. Click the Reboot Now! button as shown in [Figure 7](#).

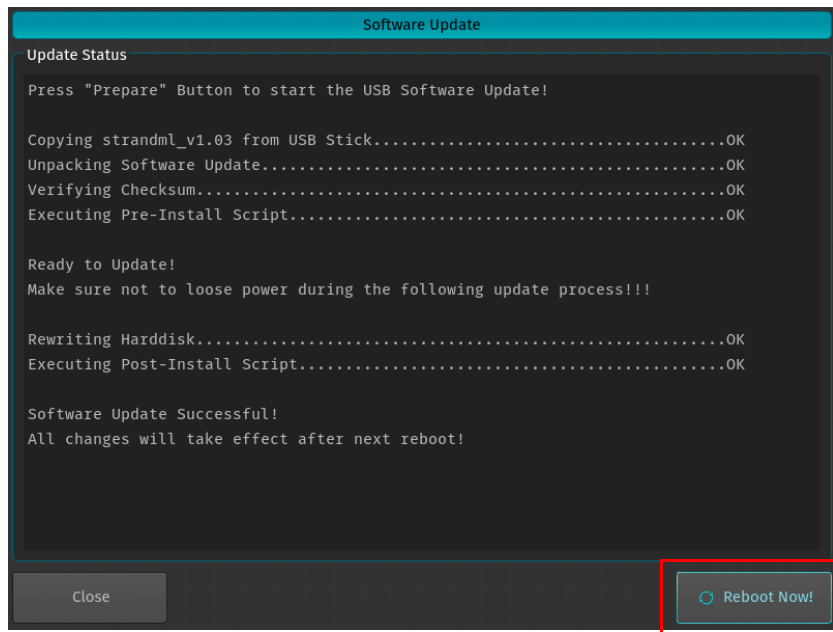


Figure 7: Software Update Window - Reboot Now

Verifying Software Version After Installation

After the console reboots, you can verify the software version number by selecting Settings and then click the "About" tab in the Setup Menu section as shown in Figure 14.

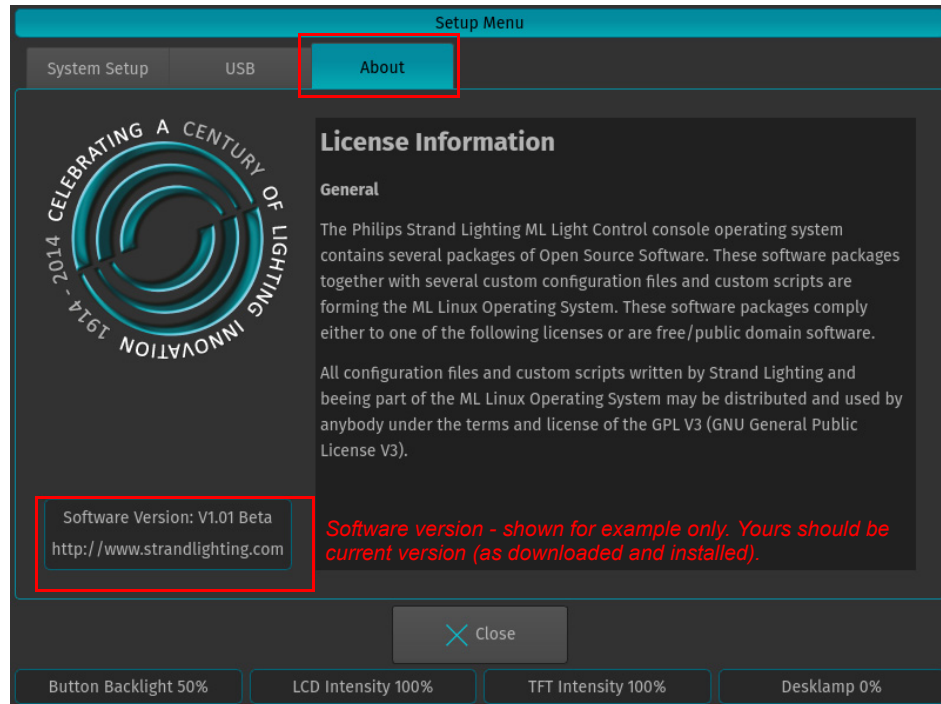


Figure 8: Setup Menu Screen - About Tab - Verifying Software Version

Updating Console Software via Internet Connection



CAUTION: Before updating the console software, make sure you have made backups of all important show and library files!

In order to update the software on the console using an Internet connection, make sure the console network interface is properly configured and that the console has Internet access.

Navigate to the Setup Menu by pressing [SETUP] and select the USB tab. Click on Online Update in the Maintenance section.

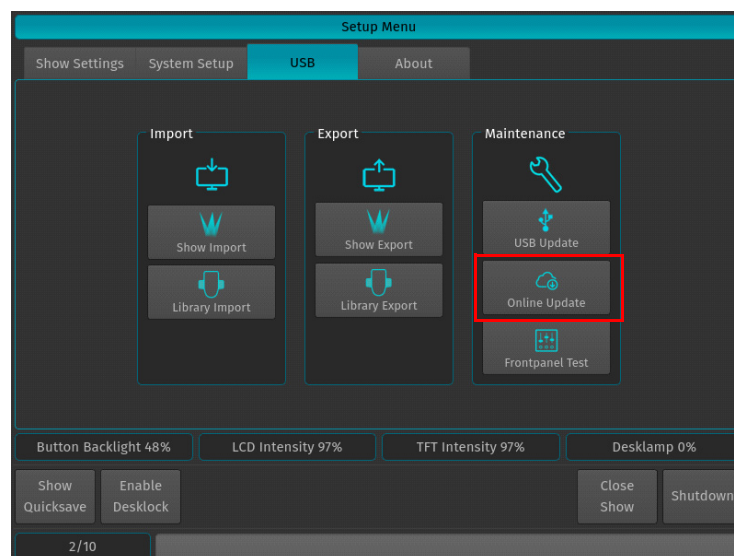


Figure 9: Setup Menu Window - Updating Console Software via Internet

The Console will present you with a list of available software updates found on the Internet. Select the appropriate file and click on Download as shown in [Figure 10](#).

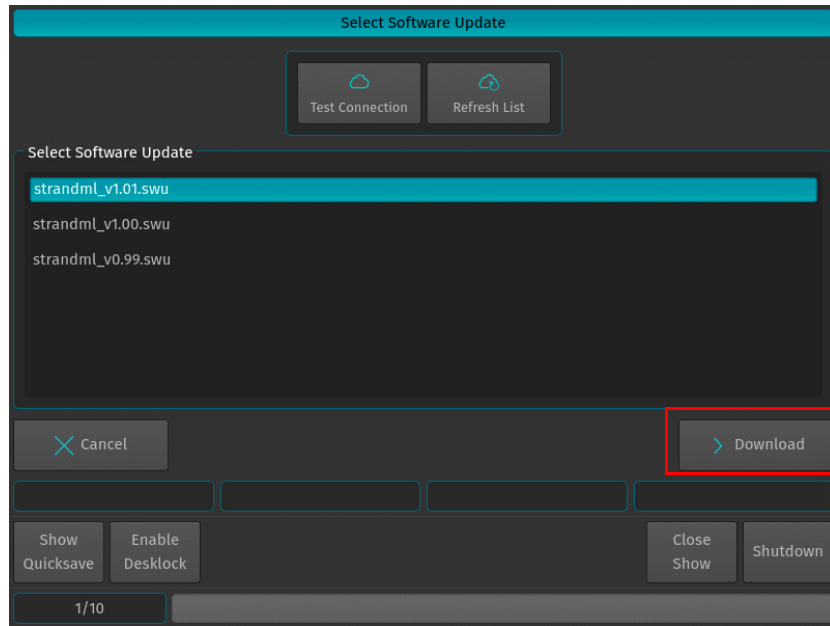


Figure 10: Select Software Update Window - Downloading Online Software

Note: You must reboot / restart the console in order for the new software to take effect.



WARNING! During the update process, DO NOT disconnect power OR switch off the console. This may render the console un-bootable! Allow the process to finish completely.

A wizard will lead you through a few steps to load the new software as shown in [Figure 11](#) and [Figure 12 on page 7](#).

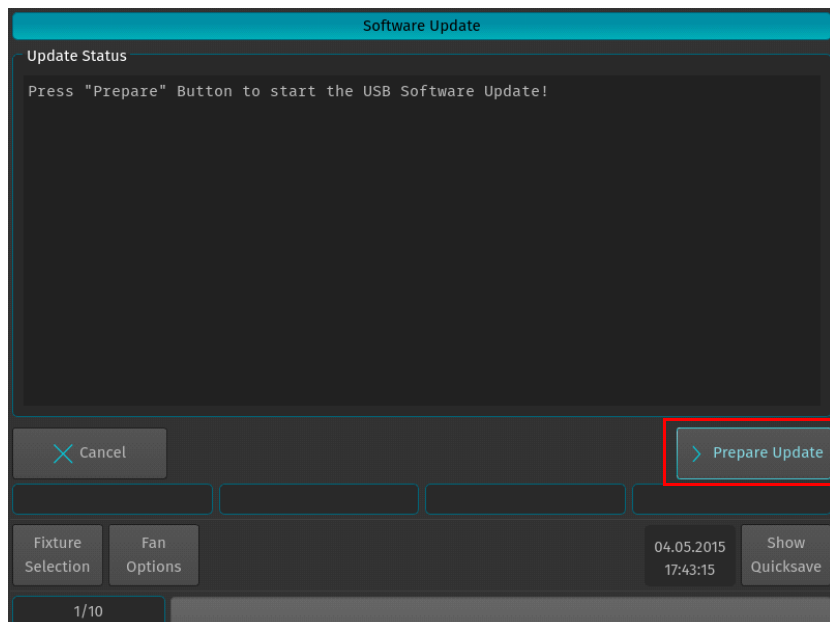


Figure 11: Software Update Window - Prepare Update

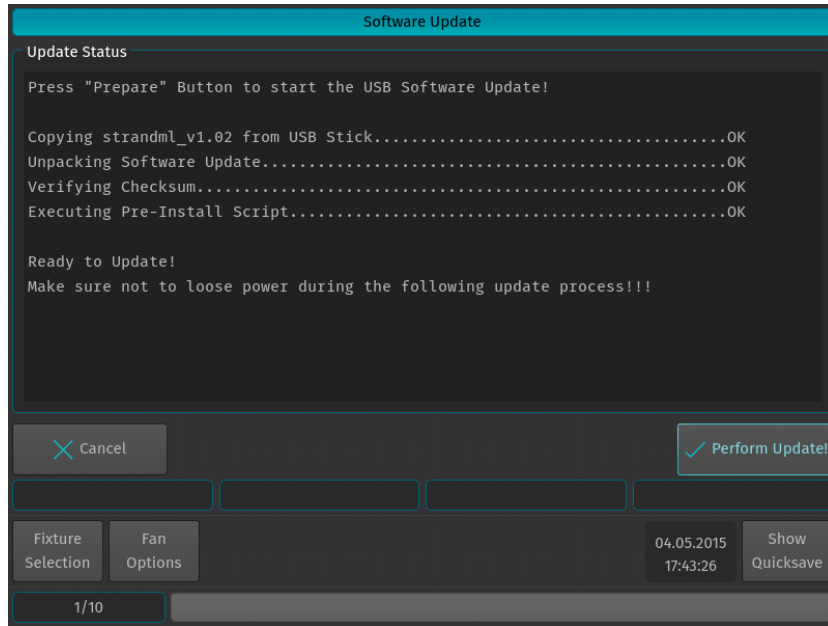


Figure 12: Software Update Window - Preform Update

Once the process is completed, you will be prompted to reboot the console. Click the Reboot Now! button as shown in Figure 13.

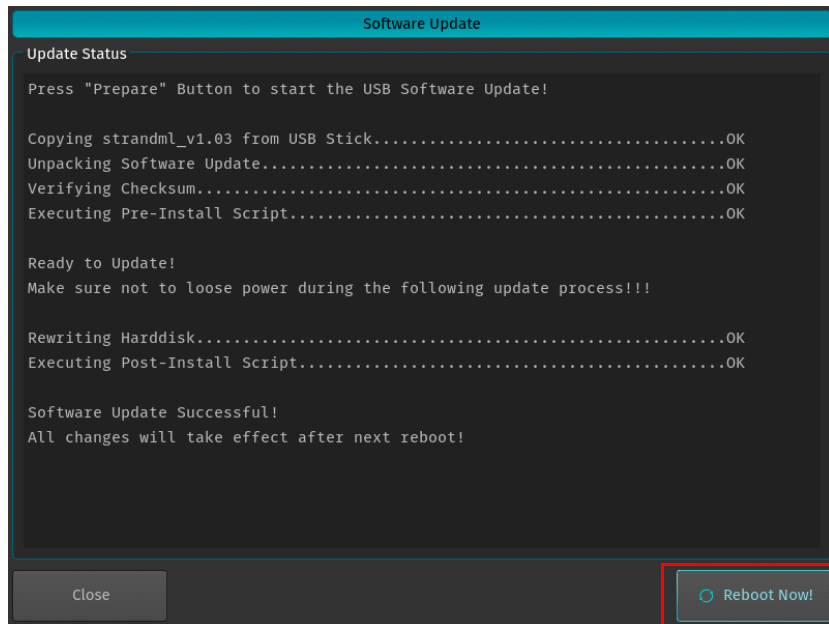


Figure 13: Software Update Window - Reboot Now

Verifying Software Version After Installation

After the console reboots, you can verify the software version number by selecting Settings and then click the "About" tab in the Setup Menu section as shown in Figure 14.

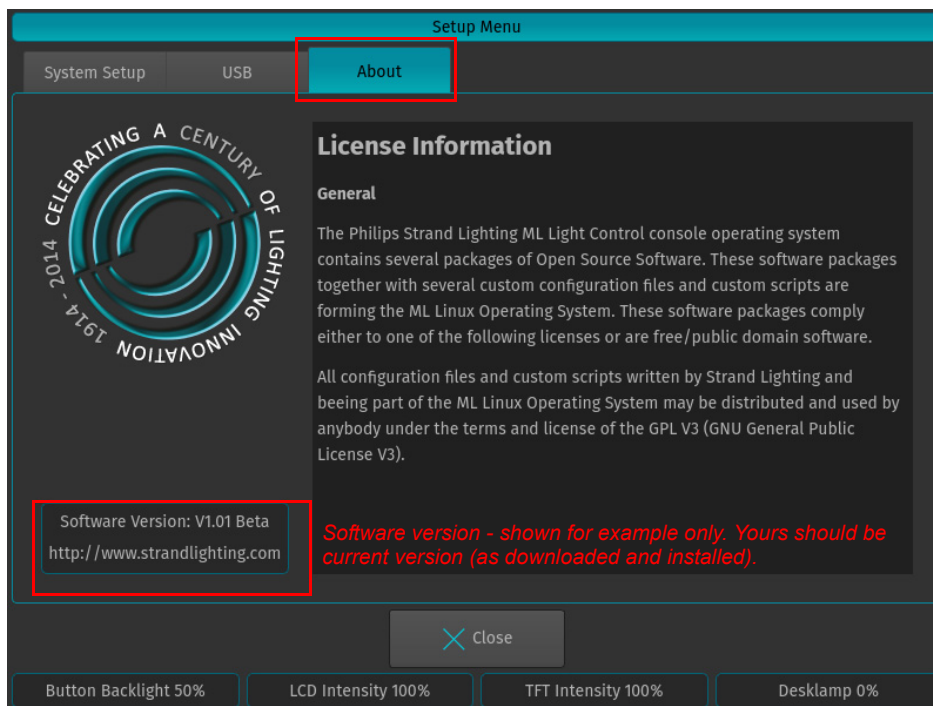


Figure 14: Setup Menu Screen - About Tab - Verifying Software Version

Need assistance? Have questions?

If you require technical assistance with loading updated console software, please contact your Authorized Philips Strand Lighting Dealer or Philips Strand Lighting Technical Support. A list of authorized dealers in your area and technical support contacts is located on the Philips Strand Lighting web site at www.strandlighting.com.

Philips Strand Lighting Offices

Philips Strand Lighting - Dallas
 10911 Petal Street
 Dallas, TX 75238
 Tel: +1 214-647-7880
 Fax: +1 214-647-8030

Philips Strand Lighting - Auckland
 19-21 Kawana Street
 Northcote, Auckland 0627
 New Zealand
 Tel: +64 9 481 0100
 Fax: +64 9 481 0101

Philips Strand Lighting - Asia
 Unit C, 14/F, Roxy Industrial Centre
 No. 41-49 Kwai Cheong Road
 Kwai Chung, N.T., Hong Kong
 Tel: +852 2796 9786
 Fax: +852 2798 6545

Philips Strand Lighting - Europe
 Rondweg zuid 85
 Winterswijk 7102 JD
 The Netherlands
 Tel: +31 (0) 543-542516

The material in this manual is for information purposes only and is subject to change without notice. Philips Strand Lighting assumes no responsibility for any errors or omissions which may appear in this manual. For comments and suggestions regarding corrections and/or updates to this manual, please contact your nearest Philips Strand Lighting office.

Note: Information contained in this document may not be duplicated in full or in part by any person without prior written approval of Philips Strand Lighting. Its sole purpose is to provide the user with conceptual information on the equipment mentioned. The use of this document for all other purposes is specifically prohibited.

© 2015 Philips Strand Lighting. All rights reserved.